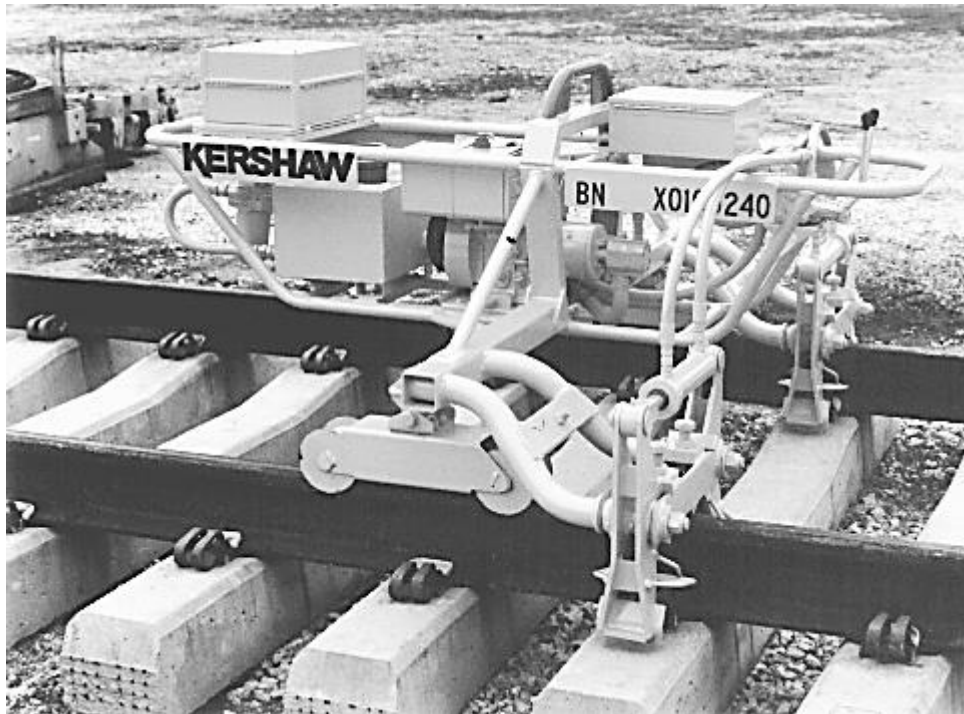


McKay Safelok Dual Klip Applicator 8-2



The Safelok Dual Klip Applicator 8-2 is designed for power application of McKay Safelok rail fastenings. The machine is manually propelled by one track-walking operator and can apply Safelok clips to two rails at a rate of up to 800 ties per hour with a minimum of operator effort. The lightweight unit can be set off the track manually for speedy track clearance and is suitable for use with 100- to 136-pound rail on concrete ties. The power unit is an air-cooled, four-stroke gasoline engine for volume production. Hydraulic components are carefully selected for easy procurement of spare parts, the company says. Principle features of the machine are: reversible direction of work, adjustable for variation in rail height and cant; and perimeter frame to minimize risk of machine damage due to careless handling.